

TO ALL FLEET VESSELS

Ref: DMA-SAPID/DMADGM/00/C1154

Date: 2021.11.28

In The Name Of God

Dear Sir,
Good Day,

Pl's find attached file "**Distribution of aquaculture and fishing boats in Rizhao**" for your kind attention and necessary precaution measures for safe navigation at LANQIAO PORT.

You are requested to confirm receipt, discuss the contents in the next consolidated meeting on board & keep a copy in the file DA-11 .

BEST REGARDS
CAPT.A.Momeni.N.
Deputy of General Manager
Department Of Maritime Affairs
Sapid Shipping Co.

[Tel:+98-21-23843242](tel:+98-21-23843242)

[Fax:+98-21-2610 0357](tel:+98-21-26100357)

[Direct Tel:+98-21-2384 3551](tel:+98-21-23843551)

PL'S REPLY TO; dma@sapidshpg.com
cso@sapidshpg.com



SAPID SHIPPING co.
Global service, Global Partnership

CONFIDENTIALITY NOTICE

This email is intended only for the addressee named above. As this email may contain confidential or privileged information, if you are not the named addressee or the person responsible for delivering the message to the named addressee, Please inform us (By Email or Telephone) before deleting it. Please delete the document from your E-Mail system. The contents should not be disclosed to any other person nor copies taken.

Distribution of aquaculture and fishing boats in Rizhao

First, Rizhao port, aquaculture area distribution

Rizhao city is located in haizhou bay, from north to south, planning the northern aquaculture area, the central aquaculture area, the southern aquaculture area and the QIAN SAN DAO islands artificial reef area. Merchant ships entering or leaving the Rizhao port or lanshan port recommended to use Rizhao inshore route.



Regional distribution map of Marine aquaculture in Rizhao

Second, the fishing habits and characteristics

- (1) Concentrated operation time at sea. Fishing boats in Rizhao will go out to sea from March 1st to April 30th and from September 1st to November 30th each year. Passing merchant ships are requested to be extra careful during this period.
- (2) AIS equipping of fishing boats. The fishing boats owned by Rizhao with pilot building and battery are generally equipped with Class B AIS equipment and use MMSI codes starting with 412, 413 and 414. However, there are still a large number of small fishing boats that often fail to display the AIS signal, which requires special caution when sailing.
- (3) Operation characteristics of large fishing vessels. Large fishing boats in Rizhao City have a length of 35 meters and a width of about 6 meters. The basic operation mode is single tow and double tow. The sailing speed is generally about 10 knots and the production operation is generally about 5 knots. In the production of double-towed fishing boats, the distance between the two vessels is about 200-300 meters, and the trawl is about 400-500 meters. The depth of the nets is about 10-30 meters. When the merchant ship runs from the rear of the fishing boat,

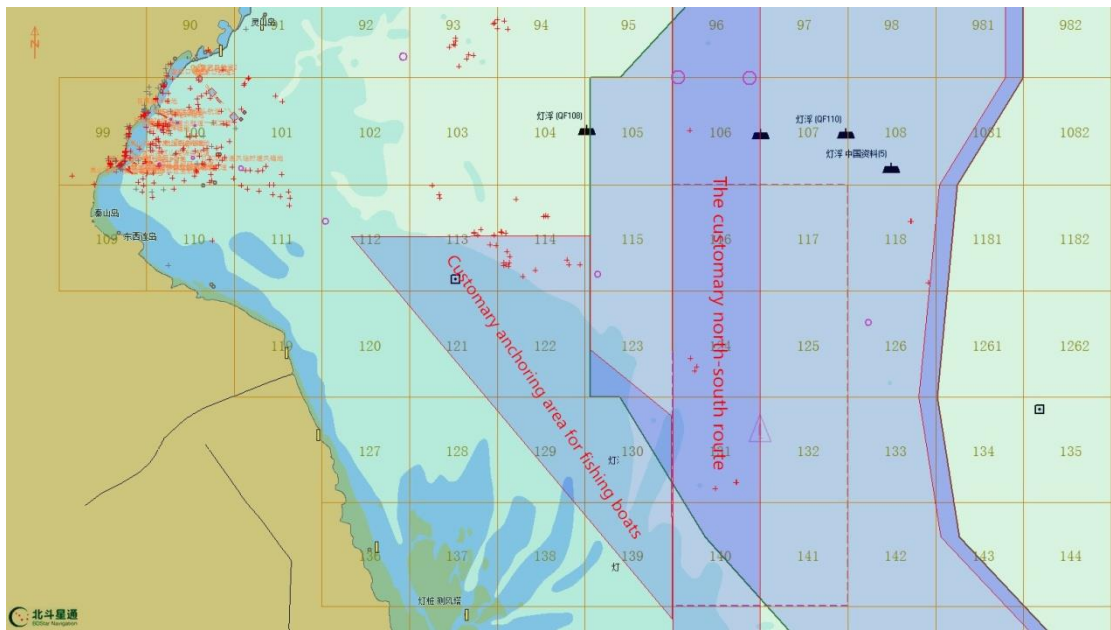
attention should be paid to it.



Large fishing boats

(4) Mooring habits of fishing boats. Fishing boat anchored at night when the general is located in the north and south west border the deepwater, shallow water area shipping concentration areas. Anchoring, when ships into the fishing boat AIS alarm 3 nm range, plus or minus 5 °, merchant ship bow is fishing vessel fishing AIS VHF channel 16 will start automatically enabled the built-in speech in both English and Chinese, in the form of broadcast to the merchant to send warning information: "is located in east longitude XXX, XXX north latitude of the fishing boat was formation anchor, please ship past active collision avoidance, we don't know English." However, fishing boats often fail to display their light type correctly. When merchant ships sail to the customary anchoring area of

fishing boats or receive such information, watch keeping should be strengthened to ensure navigation safety.



(Customary anchoring area for fishing boats)

Reference is made on fishery farm claims at Lanshan, China. In order to keep our clients posted with the development of the changes in that sea area, we, from handling cases recently, and from consulting with local Oceanic and Fishery Bureau as well as the village committee of the local fish farmers, sorted out the key information and prepared this circular.

The Latest Sketch below of the Fishing farms of Lanshan (named as A-H)

1. The Significant Change – 14 Fishery Farms Demolished from Fishery Area D

From our consultants with the local authorities and our relevant investigation recently, we were confirmed that 14 fishery farms have been demolished from fishery area D, which is requisitioned by the Lanshan port by as the fairway and navigation area. You can see the 14 fishery farms in the old Fishery Area D in the above sketch. Accordingly, the Fishery Area D is shrunk by putting the north boundary down to the black line between the two new points: Pt.1 and Pt.2. For your easy reference, the coordinates of the two new points are as below:

Pt.1: 35° 02' 30.0'' N, 119° 36' 11.0'' E;

Pt.2: 35° 02' 18.0'' N, 119° 45' 48.0'' E

2. The New Fishery Farm H Appears

In the past half year, we received several claims raised by the Owner of fishery farm H which drawn our first notification, please refer to the above sketch, and from our further investigation, it was said that there were other cases (not handled by us) happened in this area this year, furthermore, this fishery farm was set a Navigation Warning No. 0227 by Rizhao MSA on July 19th, 2019. Therefore, it seems sensible to remind Master's special attention for this farm which is marked as Area H in the above sketch with coordinates as follows:

35-10' 01.66N, 119-54' 03.38E; 35-09' 19.73N, 119-53' 52.84E

35-09' 19.65N, 119-56' 42.48E; 35-10' 01.58N, 119-56' 32.59E

3. Case Frequently Happened Again Recently in Fishery Farm A

Recently, we noted that, after silence for long time, the new cases frequently happened again in Fishery farm A, so we would like to draw your attention for this area which is marked as A in the above sketch with coordinates as follows:

The coordinates of fisher area A:

35° 06' 12.00'' N, 119° 50' 16.00'' E; 35° 03' 18.00'' N, 119° 49' 28.00'' E

35° 03' 18.00'' N, 119° 46' 48.00'' E; 35° 06' 12.00'' N, 119° 47' 30.00'' E

4. Others Fishery Farm Areas

For your/Master's easy reference, we list the coordinates of other Fishery Areas as below:

Area B:

35° 05' 41.18'' N, 119° 54' 03.73'' E; 35° 04' 21.77'' N, 119° 54' 03.82'' E

35° 04' 46.97'' N, 119° 54' 45.81'' E; 35° 05' 35.97'' N, 119° 54' 45.75'' E

Area C:

35° 04' 01.06'' N, 119° 52' 29.91'' E; 35° 03' 26.77'' N, 119° 52' 15.68'' E

35° 03' 26.87'' N, 119° 53' 56.63'' E; 35° 04' 01.14'' N, 119° 53' 49.95'' E

Area D (新 NEW):

35° 02' 30.0'' N, 119° 36' 11.0'' E; 35° 02' 18.0'' N, 119° 45' 48.0'' E

35° 00' 30.00'' N, 119° 45' 48.00'' E; 35° 01' 18.00'' N, 119° 36' 18.00'' E

Area E:

35° 00' 36.00'' N, 119° 35' 18.00'' E; 34° 59' 42.00'' N, 119° 44' 48.00'' E

34° 57' 30.00'' N, 119° 40' 42.00'' E;

Area F:

35° 11' 23.43'' N, 119° 59' 36.03'' E; 35° 10' 52.35'' N, 119° 59' 36.03'' E
35° 10' 52.34'' N, 120° 00' 54.73'' E; 35° 11' 23.43'' N, 120° 00' 54.74'' E

Area G:

35° 10' 52.40'' N, 119° 49' 58.07'' E; 35° 10' 10.63'' N, 119° 49' 42.15'' E
35° 10' 10.75'' N, 119° 51' 20.11'' E; 35° 10' 52.34'' N, 119° 51' 32.20'' E

Area H:

35° 10' 01.66'' N, 119° 54' 03.38'' E; 35° 09' 19.73'' N, 119° 53' 52.84'' E;
35° 09' 19.65'' N, 119° 56' 42.48'' E; 35° 10' 01.58'' N, 119° 56' 32.59'' E

N.RIZHAO Area:

35°26.4'N, 119°51.5'E; 35°20.5'N, 119°51.6'E;
35°20.6'N, 119°49.2'E; 35°21.9'N, 119°43.3'E;
35°28.0'N, 119°49.6'E;

In the meantime, we still have the following recommendations to ships calling or passing Lanshan port in order to minimizing fish farm claims:

In route planning, kindly take into account the fishery farms described in our latest circulars, with special attention and caution to area A and D (new). In addition, before the ship's arrival at Lanshan port, kindly check with the local agent about the route to enter the anchorage and the port, as well as the distribution of the fishery farms.

The vessels shall maintain a proper lookout, and keep close contact with the VTS center and the pilot station. In addition, the Master shall not blindly follow the recommended route of the VTS and pilot station before the pilot attending on board. The Master shall in light of the available information, carefully observe the surrounding sea area, and pay particular attention to the working boats ahead affecting the navigation (there might be fishery farms nearby the boats), and then make the correct decision, as the Master shall be responsible for the safe navigation.



FOR CAPESIZE VSL AT LANGIAO PORT

FOR HANDYSIZE/PANAMAX VSL AT LANGQIAO PORT





N.
RIZHAO
FISHERY FARM

The image shows a map of the Rizhao Fishery Farm area. A red polygon outlines the farm's boundary, with five vertices labeled 1 through 5. The text 'N. RIZHAO FISHERY FARM' is written inside the polygon. To the right of the map, a list of coordinates for each vertex is provided. The map background shows a coastline with various geographical features and a grid of latitude and longitude lines.

RIZHAO FISHERY FARM AREA

1. 35° 26.4' N, 119° 51.5' E

2. 35° 20.5' N, 119° 51.6' E

3. 35° 20.6' N, 119° 49.2' E

4. 35° 21.9' N, 119° 43.3' E

5. 35° 28.0' N, 119° 49.6' E

